

Specifications and designs are subject to change without any notice or obligation on the part of the manufacturer.  
© 1998-2008 NIKON CORPORATION

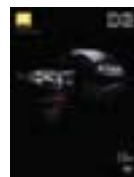


# NIKKOR

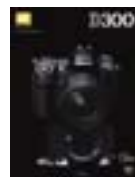
*At the heart of the image*

### Other Nikon product brochures

Brochures are available for all Nikon imaging products. Please consult your nearest authorized dealer, or check your local Nikon website via <http://www.nikon.com>



D3



D300



D200



D80



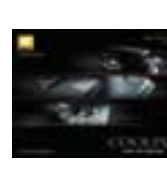
D60



D40



Total Digital Imaging System



COOLPIX Lineup



F6

You can also download brochures at <http://imaging.nikon.com/products/imaging/lineup/brochure/>



**WARNING**

TO ENSURE CORRECT USAGE, READ MANUALS CAREFULLY BEFORE USING YOUR EQUIPMENT.

THE OPEN CHAMPIONSHIP



Nikon Hong Kong Ltd. Suite 1001, 10/F Cityplaza One, 1111 King's Road, Taikoo Shing, Hong Kong [www.nikon.com.hk](http://www.nikon.com.hk)  
Nikon Singapore Pte. Ltd. No. 80 Anson Road, Fuji Xerox Towers, #10-01/02, Singapore 079907 [www.nikon.com.sg](http://www.nikon.com.sg)  
Nikon (Malaysia) Sdn. Bhd. 11th Floor, Block A, Menara PKNS, No. 17, Jalan Yong Shook Lin, 46050 Petaling Jaya, Selangor Darul Ehsan, Malaysia [www.nikon.com.my](http://www.nikon.com.my)  
Nikon Australia Pty Ltd. Unit F1, Lidcombe Business Park, 3-29 Birnie Avenue, Lidcombe NSW 2141, Australia [www.nikon.com.au](http://www.nikon.com.au)  
Nikon Imaging Korea Co., Ltd. 12F The Chamber of Commerce & Industry Bldg 45 4ga Namdaemunro, Jung-gu, Seoul, 100-743 Korea [www.nikon.co.kr](http://www.nikon.co.kr)  
Nikon India Private Limited Plot no 17, Sector 32, Institutional Area, Gurgaon 122002, Haryana, India [www.nikon.co.in](http://www.nikon.co.in)  
Nikon Canada Inc. 1366 Aerowood Drive, Mississauga, Ontario L4W 1C1, Canada [www.nikon.ca](http://www.nikon.ca)

NIKON CORPORATION Fuji Bldg., 2-3, Marunouchi 3-chome, Chiyoda-ku Tokyo 100-8331, Japan <http://www.nikon.com/>

En



# NIKKOR Lenses — Seamless Performance, Absolute Precision, and Total Reliability

When it comes to choosing photographic equipment, perhaps the most important decision a photographer faces is which lens system to use. For the majority of professional photographers, that choice is simple: Nikkor. Why? Because NIKKOR lenses offer unrivalled clarity, sharpness, focusing accuracy, range and reliability.

The reasons for this are many, not the least of which is

Nikon's total commitment to controlling every aspect of lens manufacturing. By selecting only the finest raw materials and employing the most advanced processing and design techniques, Nikon produces the precision-crafted lens elements that help you take the world's greatest pictures.

This no-compromise attitude toward ultrahigh-tech manufacturing extends to performance. For each NIKKOR lens is

designed to function seamlessly with Nikon SLRs in a synergy of purpose that is simply unparalleled. This is exemplified most clearly in the legendary Nikon F mount. For even the most advanced NIKKOR lenses incorporate this standard that has won over decades of devotees for its consistency and reliability. This design also ensures that when we release revolutionary cameras like the Nikon F6, D3 and D300 with features

such as 3D Colour Matrix Metering and iTTL Balanced Fill-Flash, you can be sure to find an array of NIKKOR lenses that can handle these advances too.

Once you see for yourself how smoothly the Nikon-NIKKOR combination works, chances are you'll do what most of the world's professional photographers do — **when you reach for a lens, it'll be a NIKKOR.**

## DX NIKKOR Lenses

Pp. 8-11

DX NIKKOR lenses, designed exclusively for use with Nikon DX-format digital SLRs, offer digital photographers unprecedented creative potential.



## Fisheye & Wide angle & Normal NIKKOR Lenses

Pp. 18-21



Wideangle AF NIKKOR lenses, including AF Fisheye NIKKOR, provide superior depth of field and fast apertures for photojournalism and travel. There are also Normal AF NIKKOR lenses for a natural perspective for diverse applications, from landscapes to candid shots.

## Zoom-NIKKOR Lenses

Pp. 12-17

Provide both versatility and portability for every type of photographer from beginners to pros for every moment.



## Telephoto NIKKOR Lenses

Pp. 22-25

Telephoto AF NIKKOR lenses, including AF DC-NIKKOR lenses, AF-S NIKKOR lenses, and AF-S Teleconverters, create dramatic sports, wildlife, portrait photographs and everything in between. AF DC-NIKKOR lenses offer creative focusing control for exceptional portraits.



## Manual-focus Lenses

Pp. 32-33

A versatile and unique selection of manual focus lenses.

## Micro-NIKKOR Lenses

Pp. 26-27

For absolute clarity and sharpness of detail for close-up photography.



## PC-E NIKKOR Lenses

Pp. 28-29

Equipped with a tilt/shift mechanism for manipulating image perspective, distortion and focus.



## Accessories

Suggested equipment combinations, and accessories for NIKKOR lenses.

P. 35



**A history of exceptional performance —**

**NIKKOR lenses**

Nikon began producing lenses under the NIKKOR name in 1933, and since then more than 40 million lenses have been sold worldwide. Throughout the years, our unwavering commitment to quality and innovation has yielded many breakthroughs in the photographic industry. For example, Nikon introduced the Nikkor Auto 24mm f/2.8 incorporating Nikon-pioneered **Close-Range Correction (CRC) system** in 1967, and started production of **aspherical lenses** in 1968. In addition, Nikon developed **ED (Extra-low Dispersion) glass** which made its first appearance in the 300mm f/2.8 ED Nikkor telephoto in 1972, and is now incorporated in many other NIKKOR lenses. And in 2003, Nikon produced the **AF-S DX Zoom-Nikkor 12-24mm f/4G IF-ED**, as the first lens optimised for Nikon DX-format digital SLRs in the new DX NIKKOR series.

These are just a few of the many achievements in lens design that exemplify Nikon's position as the world's preeminent manufacturer of professional photographic equipment. The following offers in-depth technical information that will help you understand more fully that **NIKKOR lenses provide superior performance and are thus the best match for your Nikon SLR.**

**Electronics — microcomputer innovation for precise performance**



**Where it all begins —  
Nikon glassworks**

**Lens construction**

**Computers and lens design**

**Reliability — lenses made  
to withstand the toughest  
conditions**



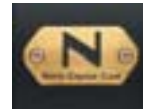
**The Nikon F lens mount —  
a tradition of continuity  
and forward compatibility**

# Designed to be the best lenses in the world

**ED** ED glass —  
an essential element  
of NIKKOR telephoto lenses



**N** Nano Crystal  
Coat



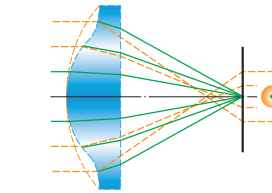
ground Precision-

**SiC** Nikon Super  
Integrated Coating  
ensures exceptional  
performance

Hybrid

Moulded glass

Aspherical lens



— : Optical path of normal lens  
— : Optical path of aspherical lens

**RF** Rear Focusing  
(RF)

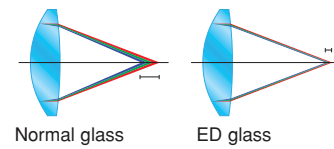
**SWM** Silent Wave Motor

**DX** DX NIKKOR

**CRC** Close-Range  
Correction system



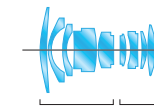
Secondary spectrum



Normal glass ED glass

**ASP** Aspherical lens  
elements

CRC

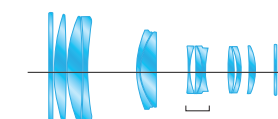


**DC** AF DC-NIKKOR lenses—  
unique NIKKOR lenses  
for unique portraits

**M/A** M/A mode

Focusing lens groups

IF



RF



**IF** Internal Focusing  
(IF)

**D** Distance information

**VR** Vibration Reduction  
(VR)



**Nikon**  
Technology

# DX NIKKOR Lenses



**N**  
greater wideangle  
covering power

specifically for use with  
Nikon DX-format digital  
SLRs



**N**  
various  
Zoom-NIKKOR lenses and  
the 10.5mm Fisheye

telephoto ranges that  
extend up to 200mm



11.1x  
zoom power.

Note: We do not recommend use of DX  
NIKKOR lenses with 35mm (135)  
or IX240 format cameras.

## AF DX Fisheye-Nikkor 10.5mm f/2.8G ED\*

Frame-filling fisheye lens for exclusive  
use with Nikon digital SLR



: ED glass elements  
: Aspherical lens elements



Lens construction: 10 elements in 7 groups  
Closest focusing: 0.14m/0.46 ft.  
Picture angle with Nikon DX format: 35mm  
(135) format equivalent to 16mm Filter attach-  
ment size: Rear-attachment type □27mm  
Hood: Built-in Dimensions: 63 x 62.5mm  
Weight: 305g

## AF-S DX Zoom-Nikkor 12-24mm f/4G IF-ED\* (2.0x)

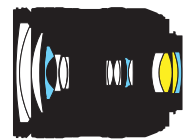
Ultra-wideangle zoom lens for exclusive  
use with Nikon digital SLR



Lens construction: 11 elements in 7 groups  
Closest focusing: 0.3m/1 ft. Picture angle  
with Nikon DX format: 35mm (135) format  
equivalent to 18-36mm Filter attachment  
size: 77mm Hood: HB-23 (provided)  
Dimensions: 82.5mm x 90mm Weight: 465g

## AF-S DX NIKKOR 16-85mm f/3.5-5.6G ED VR\* (5.3x)

Wideangle zoom lens with VR II for  
exclusive use with Nikon digital SLRs



Lens construction: 17  
elements in 11 groups  
Closest focusing:  
0.38m/1.3 ft.  
Picture angle with  
Nikon DX format:  
35mm (135) format equivalent to 24-  
127.5mm  
Filter attachment size: 67mm Hood: HB-39  
Dimensions: Approx. 72 x 85mm Weight:  
Approx. 485g

## AF-S DX Zoom-Nikkor 17-55mm f/2.8G IF-ED\* (3.2x)

Wideangle zoom lens for exclusive use  
with Nikon digital SLR



Lens construction: 14 elements in 10 groups  
Closest focusing: 0.36m/1.2 ft. Picture  
angle with Nikon DX format: 35mm (135)  
format equivalent to 25.5-82.5mm  
Filter attachment size: 77mm Hood: HB-31  
(provided) Dimensions: 85.5 x 110.5mm  
Weight: 755g

\* The G-type NIKKOR has no aperture ring; aperture should be selected from camera body.

**AF-S DX NIKKOR 18-55mm f/3.5-5.6G VR\* (3.0x)** ASP D SWM SC VR DX



*Compact zoom lens for exclusive use with Nikon digital SLRs*



Lens construction: 11 elements in 8 groups  
Closest focusing: 0.28m/0.9 ft.  
Picture angle with Nikon DX format: 35mm (135)

format equivalent to 27-82.5mm Filter attachment size: 52mm Hood: HB-45  
Dimensions: Approx. 73 x 79.5mm Weight: Approx. 265g

**AF-S DX Zoom-Nikkor 18-55mm f/3.5-5.6G ED II\* (3.0x)** ED ASP D SWM SC DX



*Affordable wideangle zoom lens for exclusive use with Nikon digital SLRs*



Lens construction: 7 elements in 5 groups  
Closest focusing: 0.28m/0.9 ft.  
Picture angle with Nikon DX format: equivalent to 27-82.5mm in 35mm (135) format  
Filter attachment size: 52mm Hood: HB-45  
Dimensions: 70.5 x 74mm Weight: 205g

**AF-S DX Zoom-Nikkor 18-70mm f/3.5-4.5G IF-ED\* (3.8x)** ED ASP IF D SWM MA SC DX



*High-power wideangle zoom lens for exclusive use with Nikon digital SLR*



Lens construction: 15 elements in 13 groups  
Closest focusing: 0.38m/1.2 ft. Picture angle with Nikon DX format: 35mm (135) format equivalent to 27-105mm

Filter attachment size: 67mm Hood: HB-32 (provided) Dimensions: 73 x 75.5mm Weight: 390g

**AF-S DX Zoom-Nikkor 18-135mm f/3.5-5.6G IF-ED\* (7.5x)** ED ASP IF D SWM SC DX



*A high-power zoom lens with SWM for exclusive use with Nikon digital SLRs*



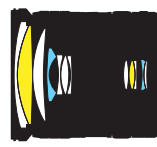
Lens construction: 15 elements in 13 groups  
Closest focusing: 0.45m/1.5 ft. Picture angle with Nikon DX format: 35mm (135)

format equivalent to 27-202.5mm Filter attachment size: 67mm Hood: HB-32  
Dimensions: 73.5 x 86.5mm Weight: 385g

**AF-S DX VR Zoom-Nikkor 18-200mm f/3.5-5.6G IF-ED\* (11.1x)** ED ASP IF D SWM MA SC VR DX



*High-power zoom lens with VR II for exclusive use with Nikon digital SLRs*



Lens construction: 16 elements in 12 groups  
Closest focusing: 0.5m/1.6 ft. Picture angle with Nikon DX format: equivalent to 27-

300mm in 35mm (135) format Filter attachment size: 72mm Hood: HB-35 (provided) Dimensions: 77 x 96.5mm Weight: 560g

**AF-S DX VR Zoom-Nikkor 55-200mm f/4-5.6G IF-ED\* (3.6x)** ED IF D SWM SC VR DX



*Affordable zoom lens with VR for exclusive use with Nikon digital SLRs*



Lens construction: 15 elements in 11 groups  
Closest focusing: 1.1m/3.6 ft. Picture angle with

Nikon DX format: equivalent to 82.5 - 300mm in 35mm (135) format Filter attachment size: 52mm Hood: HB-37  
Dimensions: 73 x 99.5mm Weight: 335g

**AF-S DX Zoom-Nikkor 55-200mm f/4-5.6G ED\* (3.6x)** ED D SWM SC DX



*Affordable high-power zoom lens for exclusive use with Nikon digital SLRs*



Lens construction: 13 elements in 9 groups  
Closest focusing: 0.95m/3.1 ft. Picture angle with

Nikon DX format: equivalent to 82.5-300mm in 35mm (135) format Filter attachment size: 52mm Hood: HB-34 (provided) Dimensions: 68 x 79mm Weight: 255g

\* The G-type NIKKOR has no aperture ring; aperture should be selected from camera body.



AF-S DX VR Zoom-Nikkor 18-200mm f/3.5-5.6G IF-ED © Tim Andrew

■ : ED glass elements  
■ : Aspherical lens elements

\* The G-type NIKKOR has no aperture ring; aperture should be selected from camera body.

# Zoom- NIKKOR Lenses



AF-S NIKKOR 24-70mm f/2.8G ED © Matthias Klum

## AF Zoom-NIKKOR lenses— distinguishing features

N

T

focal length

24mm, 17-35mm  
35mm

?

14-

18-

70-300mm 80-400mm

120mm

24-

T speed

AF-S 14-  
24mm, AF-S 17-35mm, AF-S  
24-70mm, AF-S 28-70mm  
and AF-S VR 70-200mm

Macro focusing

24-85mm f/2.8-4D IF  
VR 70-200mm  
f/2.8G IF-ED



AF Zoom-Nikkor 18-35mm f/3.5-4.5D IF-ED © Steven Yee Pui Chung

- Nano Crystal Coat
- ED glass elements
- Aspherical lens elements

**AF-S NIKKOR 14-24mm f/2.8G ED\* (1.7x)** ED ASP IF D SWM MA SC N



*Ultra-wideangle, high-speed zoom lens  
with SWM*



Lens construction: 14 elements in 11 groups  
Closest focusing: 0.28m/0.9 ft. (at 18-  
24mm focal length) Picture angle with Nikon  
DX format: 35mm (135) format equivalent to  
21-36mm Hood: Built-in Dimensions: 98 x  
131.5mm Weight: 970g

**AF-S Zoom-Nikkor 17-35mm f/2.8D IF-ED (2.1x)** ED ASP IF D SWM MA SC



*A high-performance, ultra-wideangle  
zoom lens with SWM*



Lens construction: 13 elements in 10 groups  
Closest focusing: 0.28m/0.9 ft. Picture  
angle with Nikon DX format: 35mm (135)  
format equivalent to 25.5-52.5mm Filter  
attachment size: 77mm Hood: HB-23 (pro-  
vided) Dimensions: 82.5 x 106mm  
Weight: 745g

**AF Zoom-Nikkor 18-35mm f/3.5-4.5D IF-ED (1.9x)** ED ASP IF D SC



*Portable ultra-wideangle zoom lens*



Lens construction: 11 elements in 8 groups  
Closest focusing: 0.33m/1.1 ft. Picture  
angle with Nikon DX format: 35mm (135)  
format equivalent to 27-52.5mm Filter  
attachment size: 77mm Hood: HB-23  
(provided) Dimensions: 82.5 x 82.5mm  
Weight: 370g

\* The G-type NIKKOR has no aperture ring; aperture should be selected from camera body.  
G-type NIKKOR is compatible with all exposure modes of the Nikon F6, F5, F100, F80, F75, F65, F60, F55, F50,  
F-401 series, PRONEA 600i, PRONEA S, D3, D2 series, D1 series, D300, D200, D100, D80, D70S/D70, D60, D50 and  
D40X/D40, and the [P] and [S] modes of the F4, F90 series, F70, F-801 series and F-601M. Other cameras are not compatible.



AF Zoom-Nikkor 24-85mm f/2.8-4D IF © Sonoe

- Nano Crystal Coat
- ED glass elements
- Aspherical lens elements

**AF-S NIKKOR 24-70mm f/2.8G ED\* (2.9x)** ED ASP IF D SWM MA SC N

*Standard zoom lens with constant f/2.8 aperture*



Lens construction: 15 elements in 11 groups  
Closest focusing: 0.38m/1.2 ft.

(at 35-50mm focal length) Picture angle with Nikon DX format: 35mm (135) format equivalent to 36-105mm Filter attachment size: 77mm Hood: HB-40 Dimensions: 83 x 133mm Weight: 900g

**AF Zoom-Nikkor 24-85mm f/2.8-4D IF (3.5x)** ASP IF D SC

*High-performance standard zoom lens for landscapes to portraits*



Lens construction: 15 elements in 11 groups  
Closest focusing: 0.5m/1.6 ft. (0.21m/0.7 ft. at macro setting)  
Picture angle with

Nikon DX format: 35mm (135) format equivalent to 36-127.5mm Filter attachment size: 72mm Hood: HB-25 (provided) Dimensions: 78.5 x 82.5mm Weight: 545g

**AF-S VR Zoom-Nikkor 24-120mm f/3.5-5.6G IF-ED\* (5.0x)** ED ASP IF D SWM MA SC VR

*High-power wideangle zoom lens featuring SWM and VR system*



Lens construction: 15 elements in 13 groups  
Closest focusing: 0.5m/1.6 ft. Picture angle with Nikon DX format: 35mm (135) format equivalent to 36-180mm Filter attachment size: 72mm Hood: HB-25 (provided) Dimensions: 77 x 94mm Weight: 575g

\* The G-type NIKKOR has no aperture ring; aperture should be selected from camera body.  
G-type NIKKOR is compatible with all exposure modes of the Nikon F6, F5, F100, F80, F75, F65, F60, F55, F50, F-401 series, PRONEA 600i, PRONEA S, D3, D2 series, D1 series, D300, D200, D100, D80, D70S/D70, D60, D50 and D40X/D40, and the [P] and [S] modes of the F4, F90 series, F70, F-801 series and F-601M. Other cameras are not compatible.

AF-S VR Zoom-Nikkor 70-200mm f/2.8G IF-ED © David Mendelsohn







AF Zoom-Nikkor 70-300mm f/4-5.6G © Arthur Meyerson



AF-S VR Zoom-Nikkor 200-400mm f/4G IF-ED © Chase Jarvis

**AF-S VR Zoom-Nikkor 70-200mm f/2.8G IF-ED\* (2.9x)** ED IF D SWM M/A SC VR

*Compact, lightweight G-type fast telephoto zoom lens with Vibration Reduction*



Lens construction: 21 elements in 15 groups  
Closest focusing: 1.5m/5 ft. Picture angle with Nikon DX format: 35mm (135) format equivalent to 105-300mm Filter attachment size: 77mm Hood: HB-29 (provided) Dimensions: 87 x 215mm Weight: 1,470g (1,395g without tripod mounting foot)

**AF Zoom-Nikkor 70-300mm f/4-5.6G\* (4.3x)** D SC

*High-power G-type telephoto zoom lens*



Lens construction: 13 elements in 9 groups  
Closest focusing: 1.5m/4.9 ft. Picture angle with Nikon DX format: 35mm (135) format equivalent to 105-450mm Filter attachment size: 62mm Hood: HB-26 (provided) Dimensions: 74 x 116.5mm Weight: 425g

**AF-S VR Zoom-Nikkor 70-300mm f/4.5-5.6G IF-ED\* (4.3x)** ED IF D SWM M/A SC VR

*A high-power, high-performance telephoto zoom lens with VR II*



Lens construction: 17 elements in 12 groups  
Closest focusing: 1.5m/4.9 ft. Picture angle with Nikon DX format: 35mm (135) format equivalent to 105-450mm Filter attachment size: 67mm Hood: HB-36 Dimensions: 80 x 143.5mm Weight: 745g

**AF Zoom-Nikkor 80-200mm f/2.8D ED (2.5x)** ED D SC

*Superb telephoto zoom for sports and portraits*



■ ED glass elements  
■ Aspherical lens elements



Lens construction: 16 elements in 11 groups  
Closest focusing: 1.8m/6 ft. (1.5m/4.9 ft. at macro setting) Picture angle with Nikon DX format: 35mm (135) format equivalent to 120-300mm Filter attachment size: 77mm Hood: HB-7 Dimensions: 87 x 187mm Weight: 1,300g

**AF VR Zoom-Nikkor 80-400mm f/4.5-5.6D ED (5x)** ED D SC VR

*Compact, lightweight telephoto zoom lens with Vibration Reduction*



Lens construction: 17 elements in 11 groups  
Closest focusing: 2.3m/7.5 ft. Picture angle with Nikon DX format: 35mm (135) format equivalent to 120-600mm Filter attachment size: 77mm Hood: HB-24 (provided) Dimensions: 91 x 171mm Weight: 1,360g (1,210g without tripod mounting foot)

**AF-S VR Zoom-Nikkor 200-400mm f/4G IF-ED\* (2x)** ED IF D SWM M/A SC VR

*The AF-S VR supertelephoto 2x zoom lens*



Lens construction: 24 elements in 17 groups  
Closest focusing: 2m/6.5 ft. Picture angle with Nikon DX format: 35mm (135) format equivalent to 300-600mm Filter attachment size: 52mm Hood: HK-30 (provided) Dimensions: 124 x 365mm Weight: 3,275g

\* The G-type NIKKOR has no aperture ring; aperture should be selected from camera body.  
G-type NIKKOR is compatible with all exposure modes of the Nikon F6, F5, F100, F80, F75, F65, F60, F55, F50, F-401 series, PRONEA 600i, PRONEA S, D3, D2 series, PRONEA S, D3, D2 series, D1 series, D300, D200, D100, D80, D70S/D70, D60, D50 and D40X/D40, and the [P] and [S] modes of the F4, F90 series, F70, F-801 series and F-601M. Other cameras are not compatible.

# Fisheye & **Wide** angle NIKKOR Lenses



AF Fisheye-Nikkor 16mm f/2.8D © Tim Andrew

# Normal NIKKOR Lenses



AF Nikkor 50mm f/1.8D © Steve Zhao

Wideangle and Normal  
AF NIKKOR lenses —  
distinguishing features

**W**ideangle NIKKOR lenses

14mm f/2.8D ED

**F**

fisheye f/2.8D

16mm

Normal lenses



50mm f/1.4D

50mm f/1.8D

AF Fisheye-Nikkor 16mm f/2.8D   



*Frame-filling fisheye makes dramatic images*

 : ED glass elements  
 : Aspherical lens elements

**Fisheye**  
NIKKOR Lenses



Lens construction: 8 elements in 5 groups  
Closest focusing: 0.25m/0.85 ft. Picture angle with Nikon DX format: 35mm (135) format equivalent to 24mm Filter (provided): L37C, A2, B2, O56 Hood: Built-in Dimensions: 63 x 57mm Weight: 290g

AF Nikkor 14mm f/2.8D ED     



*High-performance, ultra-wideangle lens for photo journalism*

**Wide** angle  
NIKKOR Lenses



Lens construction: 14 elements in 12 groups  
Closest focusing: 0.2m/0.66 ft. Picture angle with Nikon DX format: 35mm (135) format equivalent to 21mm Filter attachment size: Rear-attachment type □27mm Hood: Built-in Dimensions: 87 x 86.5mm Weight: 670g

AF Nikkor 20mm f/2.8D   



*Versatile ultra-wideangle lens for general photography*



Lens construction: 12 elements in 9 groups  
Closest focusing: 0.25m/0.85 ft. Picture angle with Nikon DX format: 35mm (135) format equivalent to 30mm Filter attachment size: 62mm Hood: HB-4 Dimensions: 69 x 42.5mm Weight: 270g



AF Nikkor 50mm f/1.8D © Fraser Harding



AF Nikkor 50mm f/1.4D © Chase Jarvis

■ : ED glass elements  
 ■ : Aspherical lens elements

## Normal NIKKOR Lenses

### AF Nikkor 24mm f/2.8D



*Superb wideangle for landscapes or candid*



Lens construction: 9 elements in 9 groups  
 Closest focusing: 0.3m/1 ft. Picture angle with Nikon DX format: 35mm (135) format equivalent to 36mm Filter attachment size: 52mm Hood: HN-1 Dimensions: 64.5 x 46mm Weight: 270g

### AF Nikkor 28mm f/2.8D



*Standard wideangle for general photography*



Lens construction: 6 elements in 6 groups  
 Closest focusing: 0.25m/0.85 ft. Picture angle with Nikon DX format: 35mm (135) format equivalent to 42mm Filter attachment size: 52mm Hood: HN-2 Dimensions: 65 x 44.5mm Weight: 205g

### AF Nikkor 35mm f/2D



*Versatile wideangle ideal for a broad range of uses*



Lens construction: 6 elements in 5 groups  
 Closest focusing: 0.25m/0.85 ft. Picture angle with Nikon DX format: 35mm (135) format equivalent to 52.5mm Filter attachment size: 52mm Hood: HN-3 Dimensions: 64.5 x 43.5mm Weight: 205g

### AF Nikkor 50mm f/1.4D



*High-performance normal lens*



Lens construction: 7 elements in 6 groups  
 Closest focusing: 0.45m/1.5 ft. Picture angle with Nikon DX format: 35mm (135) format equivalent to 75mm Filter attachment size: 52mm Hood: HR-2 Dimensions: 64.5 x 42.5mm Weight: 230g

### AF Nikkor 50mm f/1.8D



*Portable normal lens*



Lens construction: 6 elements in 5 groups  
 Closest focusing: 0.45m/1.5 ft. Picture angle with Nikon DX format: 35mm (135) format equivalent to 75mm Filter attachment size: 52mm Hood: HR-2 Dimensions: 63.5 x 39mm Weight: 155g

# Telephoto NIKKOR Lenses

(DC-NIKKOR lenses, AF-S NIKKOR lenses, AF-S Teleconverters)



AF-S Nikkor 300mm f/4D IF-ED © Frans Lanting

Telephoto AF NIKKOR lenses — distinguishing features

W

**NIKKOR**  
AF-S

SWM.

O

M/A control

lock buttons  
range limiter

F

AF DC-  
NIKKOR  
Defocus-  
image Control

N

Teleconverters

AF-S

TC-14E II  
TC-17E II  
TC-20E II



AF Nikkor 85mm f/1.8D © Peter Frank

■: ED glass elements  
■: Aspherical lens elements

**AF Nikkor 85mm f/1.4D IF IF D SWM**



*The fastest NIKKOR telephoto — great for indoor portraits*



Lens construction: 9 elements in 8 groups Closest focusing: 0.85m/3 ft. Picture angle with Nikon DX format: 35mm (135) format equivalent to 127.5mm Filter attachment size: 77mm Hood: HN-31 (Provided) Dimensions: 80 x 72.5mm Weight: 550g

**AF Nikkor 85mm f/1.8D IF D SWM**



*Portable medium telephoto — ideal for portraits*



Lens construction: 6 elements in 6 groups Closest focusing: 0.85m/3 ft. Picture angle with Nikon DX format: 35mm (135) format equivalent to 127.5mm Filter attachment size: 62mm Hood: HN-23 (Provided) Dimensions: 71.5 x 58.5mm Weight: 380g

**AF DC-Nikkor 105mm f/2D IF IF D SWM**



*Standard portrait lens with Defocus-image Control*



Lens construction: 6 elements in 6 groups Closest focusing: 0.9m/3 ft. Picture angle with Nikon DX format: 35mm (135) format equivalent to 157.5mm Filter attachment size: 72mm Hood: Built-in Dimensions: 79 x 111mm Weight: 640g

**AF DC-Nikkor 135mm f/2D IF IF D SWM**



*High-performance telephoto with Defocus-image Control*



Lens construction: 7 elements in 6 groups Closest focusing: 1.1m/4 ft. Picture angle with Nikon DX format: 35mm (135) format equivalent to 202.5mm Filter attachment size: 72mm Hood: Built-in Dimensions: 79 x 120mm Weight: 815g

**AF Nikkor 180mm f/2.8D IF-ED** ED IF D SC



*High-performance medium telephoto for sports arenas or concert halls*



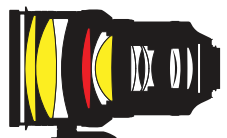
Lens construction: 8 elements in 6 groups Closest focusing: 1.5m/5 ft.

Picture angle with Nikon DX format: 35mm (135) format equivalent to 270mm Filter attachment size: 72mm Hood: Built-in Dimensions: 78.5 x 144mm Weight: 760g

**AF-S VR Nikkor 200mm f/2G IF-ED\*** ED IF D SWM M/A SC VR



*High-performance telephoto featuring SWM and VR system*



Lens construction: 13 elements in 9 groups Closest focusing: 1.9m/6.2 ft.

Picture angle with Nikon DX format: 35mm (135) format equivalent to 300mm Filter attachment size: 52mm Hood: HK-31 (Provided) Dimensions: 124 x 203mm Weight: 2,900g

**AF-S VR Nikkor 300mm f/2.8G IF-ED\*** ED IF D SWM M/A SC N VR



*Telephoto with SWM and VR for serious sport photographers*



Lens construction: 11 elements in 8 groups Closest focusing: 2.3m/7.5 ft.

(2.2m/7.2 ft. for MF) Picture angle with Nikon DX format: 35mm (135) format equivalent to 450mm Filter attachment size: 52mm Hood: HK-30 (Provided) Dimensions: Approx. 124 x 267.5mm Weight: Approx. 2,870g

Note: Nano Crystal Coat is applied to the rear (camera side) of lens surfaces.

**AF-S Nikkor 300mm f/4D IF-ED** ED IF D SWM M/A SC



*A light, compact AF-S telephoto lens*



Lens construction: 10 elements in 6 groups Closest focusing: 1.45m/4.8 ft.

Picture angle with Nikon DX format: 35mm (135) format equivalent to 450mm Filter attachment size: 77mm Hood: Built-in Dimensions: 90 x 222.5mm Weight: 1,440g (1,300g without tripod mounting foot)

**AF-S NIKKOR 400mm f/2.8G ED VR\*** ED IF D SWM M/A SC N VR



*High-performance supertelephoto with SWM and VR II*



Lens construction: 14 elements in 11 groups Closest focusing: 2.9m/9.5 ft. (2.8m/9.2 ft. in MF) Picture angle with Nikon DX format: 35mm (135) format equivalent to 600mm Filter attachment size: 52mm Hood: HK-33 (provided) Dimensions: 159.5 x 368mm Weight: 4,620g



AF-S NIKKOR 600mm f/4G ED VR © Nikon

- Nano Crystal Coat
- Super ED glass elements
- ED glass elements
- Aspherical lens elements

**AF-S NIKKOR 500mm f/4G ED VR\*** ED IF D SWM M/A SC N VR



*Powerful supertelephoto with SWM and VR II*



Lens construction: 14 elements in 11 groups Closest focusing: 4.0m/13.1 ft. (3.85m/12.6 ft. in MF) Picture angle with Nikon DX format: 35mm (135) format equivalent to 750mm Filter attachment size: 52mm Hood: HK-34 (provided) Dimensions: 139.5 x 391mm Weight: 3,880g

**AF-S NIKKOR 600mm f/4G ED VR\*** ED IF D SWM M/A SC N VR



*Powerful supertelephoto with SWM and VR II*



Lens construction: 15 elements in 12 groups Closest focusing: 5.0m/16.4 ft. (4.8m/15.7 ft. in MF) Picture angle with Nikon DX format: 35mm (135) format equivalent to 900mm Filter attachment size: 52mm Hood: HK-34 (provided) Dimensions: 166 x 445mm Weight: 5,060g

# Teleconverters

**AF-S Teleconverter TC-14E II**



Lens construction: 5 elements in 5 groups Dimensions: 66 x 24.5mm Weight: 200g

**AF-S Teleconverter TC-17E II**



Lens construction: 7 elements in 4 groups Dimensions: 66 x 31.5mm Weight: 250g

**AF-S Teleconverter TC-20E II**



Lens construction: 7 elements in 6 groups Dimensions: 66 x 55mm Weight: 355g

Note:

\* The G-type NIKKOR has no aperture ring; aperture should be selected from camera body. G-type NIKKOR is compatible with all exposure modes of the Nikon F6, F5, F100, F80, F75, F65, F60, F55, F50, F-401 series, PRONEA 600i, PRONEA S, D3, D2 series, D1 series, D300, D200, D100, D80, D70S/D70, D60, D50 and D40X/D40 and the [P] and [S] modes of the F4, F90 series, F70, F-801 series and F-601M. Other cameras are not compatible.

# Micro-NIKKOR Lenses



AF-S VR Micro-Nikkor 105mm f/2.8G IF-ED © Chase Jarvis



AF-S VR Micro-Nikkor 105mm f/2.8G IF-ED © Ghislain Simard

Micro-NIKKOR lenses — distinguishing features

**F**

**E**

1:1 life-size close-ups

f/32 maximum depths of field

**M**

a host of Nikon original optical features

**AF-S Micro NIKKOR 60mm f/2.8G ED\*** ED ASP IF D SWM MA SC N



*Compact, high-performance Micro lens with SWM*

■ Nano Crystal Coat  
■ ED glass elements  
■ Aspherical lens elements



Lens construction: 12 elements in 9 groups  
Closest focusing: 0.185m (0.6 ft.)  
Picture angle with Nikon DX format: 35mm (135) format equivalent to 90mm  
Working distance\*: 49.5mm  
Filter attachment size: 62mm Hood: HB-42 Dimensions: Approx. 73 x 89mm Weight: Approx. 425g

**AF Micro-Nikkor 60mm f/2.8D** GR D SC



*Nikon's most compact Micro lens for close-up and general photography*



Lens construction: 8 elements in 7 groups  
Closest focusing: 0.219m (8-3/4 in.)  
Picture angle with Nikon DX format: 35mm (135) format equivalent to 90mm  
Working distance\*: 90.4mm  
Filter attachment size: 62mm Hood: HN-22 Dimensions: 70 x 74.5mm Weight: 440g

**AF-S VR Micro-Nikkor 105mm f/2.8G IF-ED\*** ED SC N IF D SWM MA SC VR



*The world's first macro lens equipped with SWM and VR systems*



Lens construction: 14 elements in 12 groups  
Closest focusing: 0.314m (1 ft.)  
Picture angle with Nikon DX format: 35mm (135) format equivalent to 157.5mm  
Working distance\*: 154mm  
Filter attachment size: 62mm Hood: HB-38 (provided) Dimensions: 83 x 116mm Weight: 790g

**AF Micro-Nikkor 200mm f/4D IF-ED** ED IF GR D SC



*Telephoto Micro lens for close-ups and nature photography*



Lens construction: 13 elements in 8 groups  
Closest focusing: 0.5m (1-5/8 ft.)  
Picture angle with Nikon DX format: 35mm (135) format equivalent to 300mm  
Working distance\*: 260mm  
Filter attachment size: 62mm Hood: HN-30 Dimensions: 76 x 193mm Weight: 1,190g

**PC Micro-Nikkor 85mm f/2.8D** GR D SC



*85mm medium telephoto lens with tilt/shift mechanism and macro capability*



Lens construction: 6 elements in 5 groups  
Closest focusing: 0.39m (1.3 ft.)  
Picture angle with Nikon DX format: 35mm (135) format equivalent to 127.5mm  
Working distance\*: 210mm  
Filter attachment size: 77mm Hood: HB-22 Dimensions: 83.5 x 109.5mm Weight: 775g

\*Working distance is the distance between the front of the lens and the subject. It is desirable to have a longer free working distance for close-up work due to lighting and subject considerations.

\* The G-type NIKKOR has no aperture ring; aperture should be selected from camera body. G-type Nikkor is compatible with all exposure modes of the Nikon F6, F5, F100, F80, F75, F65, F60, F55, F50, F-401 series, PRONEA 600i, PRONEA S, D3, D2 series, D1 series, D300, D200, D100, D80, D70S/D70, D60, D50 and D40X/D40, and the [P] and [S] modes of the F4, F90 series, F70, F-801 series and F-601M. Other cameras are not compatible.

# PC-E NIKKOR Lenses



PC-E Micro NIKKOR 45mm f/2.8D ED © Nikon

Perspective distortion is corrected by shifting the lens up



Tilting the lens achieves focus on a specific part of the subject



Without tilting

PC-E Micro NIKKOR 85mm f/2.8D © N.Yuasa

PC-E NIKKOR lenses — distinguishing features

**P**erspective Control capability, a tilt/shift mechanism

**F**ewer numerous state-of-the-art Nikon optical features and technologies

**T**ransparent electromagnetic diaphragm auto aperture control

**I**

## PC-E NIKKOR 24mm f/3.5D ED

ED ASP D SC N

High-performance wideangle lens with Perspective Control



■ Nano Crystal Coat  
■ ED glass elements  
■ Aspherical lens elements



Lens construction: 13 elements in 10 groups  
Closest focusing: 0.21m/0.75 ft.  
Picture angle with Nikon DX Format: 35mm (135) format equivalent to 36mm  
Filter attachment size: 77mm  
Hood: HB-41  
Dimensions: Approx. 82.5 x 108mm  
Weight: Approx. 730g

## PC-E Micro NIKKOR 45mm f/2.8D ED

ED GC D SC N

Normal lens with Perspective Control and macro capability



Lens construction: 9 elements in 8 groups  
Closest focusing: 0.253m/0.83 ft.  
Picture angle with Nikon DX Format: 35mm (135) format equivalent to 67.5mm  
Filter attachment size: 77mm  
Hood: HB-43  
Dimensions: Approx. 82.5 x 112mm  
Weight: Approx. 740g



Entire subject plane is in focus with tilting



Without tilting

## PC-E Micro NIKKOR 85mm f/2.8D

GC D SC N

Medium telephoto lens with Perspective Control and macro capability



Lens construction: 6 elements in 5 groups  
Closest focusing: 0.39m/1.3 ft.  
Picture angle with Nikon DX Format: 35mm (135) format equivalent to 67.5mm  
Filter attachment size: 77mm  
Hood: HB-22  
Dimensions: Approx. 83.5 x 107mm  
Weight: Approx. 635g

| Lens   | Lens Construction (groups/elements) | Picture Angle with 35mm (135) format | Picture Angle with Nikon DX format | Minimum f/Stop | Closest Focus Distance |               | Filter Attachment Size (mm) | Lens Case     | Lens Hood | Dia. x Length (extension from lens mount) (mm) | Weight (g) | TC-201 | TC-301 | TC-14A | TC-14B | TC-14E II | TC-17E II | TC-20E II | AF-3 | Max. number of HN-36 hoods usable | AF-4       | Max. number of HN-37 hoods usable |                                    |
|--|-------------------------------------|--------------------------------------|------------------------------------|----------------|------------------------|---------------|-----------------------------|---------------|-----------|--|------------|--------|--------|--------|--------|-----------|-----------|-----------|------|-----------------------------------|------------|-----------------------------------|------------------------------------|
|  |                                     |                                      |                                    |                | [Macro Setting]        | [m (ft.)]     |                             |               |           |  |            |        |        |        |        |           |           |           |      |                                   |            |                                   | Reproduction Ratio [Macro Setting] |
| <b>DX</b>  |                                     |                                      |                                    |                |                        |               |                             |               |           |  |            |        |        |        |        |           |           |           |      |                                   |            |                                   |                                    |
| AF DX Fisheye-Nikkor 10.5mm f/2.8G ED                  | 7/10                                |                                      | 180                                | 22             | 0.14 (0.46)            | 1/5           | Rear-attachment type        | CL-0715       | Built-in  | 63 x 62.5                                      | 305        |        |        |        |        |           |           |           |      | Not usable                        | Not usable |                                   |                                    |
| AF-S DX Zoom-Nikkor 12-24mm f/4G IF-ED                 | 7/11                                |                                      | 99 -61                             | 22             | 0.3 (1)                | 1/8.3         | 77                          | CL-S2         | HB-23     | 82.5 x 90                                      | 465        |        |        |        |        |           |           |           |      | ✓ <sup>*2</sup>                   | 0          | ✓                                 | 0                                  |
| AF-S DX NIKKOR 16-85mm f/3.5-5.6G ED VR                | 11/17                               |                                      | 83 -18 50'                         | 22             | 0.38 (1.3)             | 1/4.6         | 67                          | CL-1015       | HB-39     | 72 x 85  | 485        |        |        |        |        |           |           |           |      |                                   |            |                                   |                                    |
| AF-S DX Zoom-Nikkor 17-55mm f/2.8G IF-ED               | 10/14                               |                                      | 79 -28 50'                         | 22             | 0.36 (1.2)             | 1/5           | 77                          | CL-1120       | HB-31     | 85.5 x 110.5                                   | 755        |        |        |        |        |           |           |           |      | ✓                                 | 0          | ✓                                 | 0                                  |
| AF-S DX NIKKOR 18-55mm f/3.5-5.6G VR                   | 8/11                                |                                      | 76 -28 50'                         | 22             | 0.28 (0.9)             | 1/3.2         | 52                          | CL-0815       | HB-45     | 73 x 79.5                                      | 265        |        |        |        |        |           |           |           |      | ✓                                 | 0          | ✓                                 | 1                                  |
| AF-S DX Zoom-Nikkor 18-55mm f/3.5-5.6G ED II           | 5/7                                 |                                      | 76 -28 50'                         | 22             | 0.28 (0.9)             | 1/3.2         | 52                          | CL-0815       | HB-45     | 70.5 x 74                                      | 205        |        |        |        |        |           |           |           |      | ✓                                 | 0          | ✓                                 | 1                                  |
| AF-S DX Zoom-Nikkor 18-70mm f/3.5-4.5G IF-ED           | 13/15                               |                                      | 76 -22 50'                         | 22             | 0.38 (1.2)             | 1/6.2         | 67                          | CL-0915       | HB-32     | 73 x 75.5                                      | 390        |        |        |        |        |           |           |           |      | ✓                                 | 0          | ✓                                 | 0                                  |
| AF-S DX Zoom-Nikkor 18-135mm f/3.5-5.6G IF-ED          | 13/15                               |                                      | 76 -12                             | 22             | 0.45 (1.5)             | 1/4.25        | 67                          | CL-0915       | HB-32     | 73.5 x 86.5                                    | 385        |        |        |        |        |           |           |           |      | ✓                                 | 0          | ✓                                 | 1                                  |
| AF-S DX VR Zoom-Nikkor 18-200mm f/3.5-5.6G IF-ED       | 12/16                               |                                      | 76 8                               | 22             | 0.5 (1.5/8)            | 1/4.5         | 72                          | CL-1018       | HB-35     | 77 x 96.5                                      | 560        |        |        |        |        |           |           |           |      | ✓                                 | 0          | ✓                                 | 0                                  |
| AF-S DX VR Zoom-Nikkor 55-200mm f/4-5.6G IF-ED         | 11/15                               |                                      | 28 50'-8                           | 22             | 1.1 (3.6)              | 1/4.25        | 52                          | CL-0918       | HB-37     | 73 x 99.5                                      | 335        |        |        |        |        |           |           |           |      | ✓                                 | 5          | ✓                                 | 5                                  |
| AF-S DX Zoom-Nikkor 55-200mm f/4-5.6G ED               | 9/13                                |                                      | 28 50'-8                           | 22             | 0.95 (3.1)             | 1/3.5         | 52                          | CL-0815       | HB-34     | 68 x 79  | 255        |        |        |        |        |           |           |           |      | ✓                                 | 5          | ✓                                 | 5                                  |
| <b>Zoom</b>  |                                     |                                      |                                    |                |                        |               |                             |               |           |  |            |        |        |        |        |           |           |           |      |                                   |            |                                   |                                    |
| AF-S NIKKOR 14-24mm f/2.8G ED                          | 11/14                               | 114 -84                              | 90 -61                             | 22             | 0.28 (0.9)             | 1/6.7         |                             | CL-M3         | Built-in  | 98 x 131.5                                     | 970        |        |        |        |        |           |           |           |      | Not usable                        | Not usable |                                   |                                    |
| AF-S Zoom-Nikkor 17-35mm f/2.8D IF-ED                  | 10/13                               | 104 -62                              | 79 -44                             | 22             | 0.28 (0.9)             | 1/4.6         | 77                          | CL-76         | HB-23     | 82.5 x 106                                     | 745        | ①      |        |        |        |           |           |           |      | ✓ <sup>*2</sup>                   | 0          | ✓                                 | 0                                  |
| AF Zoom-Nikkor 18-35mm f/3.5-4.5D IF-ED                | 8/11                                | 100 -62                              | 76 -44                             | 22             | 0.33 (1.1)             | 1/6.7         | 77                          | CL-S2         | HB-23     | 82.5 x 82.5                                    | 370        | ①      |        | ①      |        |           |           |           |      | ✓ <sup>*2</sup>                   | 0          | ✓                                 | 0                                  |
| AF-S NIKKOR 24-70mm f/2.8G ED                          | 11/15                               | 84 -34 20'                           | 61 -22 50'                         | 22             | 0.38 (1.2)             | 1/3.7         | 77                          | CL-M3         | HB-40     | 83 x 133                                       | 900        |        |        |        |        |           |           |           |      | ✓ <sup>*2</sup>                   | 0          | ✓                                 | 0                                  |
| AF Zoom-Nikkor 24-85mm f/2.8-4D IF                     | 11/15                               | 84 -28 30'                           | 61 -18 50'                         | 22             | 0.5 (1.6) [0.21 (0.7)] | 1/5.9 [1/2]   | 72                          | CL-S2         | HB-25     | 78.5 x 82.5                                    | 545        | ①      |        | ①      |        |           |           |           |      | ✓ <sup>*2</sup>                   | 0          | ✓                                 | 0                                  |
| AF-S VR Zoom-Nikkor 24-120mm f/3.5-5.6G IF-ED          | 13/15                               | 84 -20 30'                           | 61 -13 20'                         | 22             | 0.5 (1.6)              | 1/4.8         | 72                          | CL-S2         | HB-25     | 77 x 94  | 575        |        |        |        |        |           |           |           |      | ✓ <sup>*2</sup>                   | 0          | ✓                                 | 0                                  |
| AF-S VR Zoom-Nikkor 70-200mm f/2.8G IF-ED              | 15/21                               | 34 20'-12 20'                        | 22 50'-8                           | 22             | 1.5 (5)                | 1/6.1         | 77                          | CL-M2         | HB-29     | 87 x 215                                       | 1,470      |        |        |        |        | ②         | ②         | ②         |      | ✓                                 | 0          | ✓                                 | 2                                  |
| AF Zoom-Nikkor 70-300mm f/4-5.6G                       | 9/13                                | 34 20'-8 10'                         | 22 50'-5 20'                       | 32             | 1.5 (4.9)              | 1/3.9         | 62                          | CL-S4         | HB-26     | 74 x 116.5                                     | 425        |        |        |        |        |           |           |           |      | ✓                                 | 3          | ✓                                 | 4                                  |
| AF-S VR Zoom-Nikkor 70-300mm f/4.5-5.6G IF-ED          | 12/17                               | 34 20'-8 10'                         | 22 50'-5 20'                       | 32             | 1.5 (4.9)              | 1/4           | 67                          | CL-1022       | HB-36     | 80 x 143.5                                     | 745        |        |        |        |        |           |           |           |      | ✓                                 | 2          | ✓                                 | 4                                  |
| AF Zoom-Nikkor 80-200mm f/2.8D ED <sup>*1</sup>        | 11/16                               | 30 10'-12 20'                        | 20 -8                              | 22             | 1.8 (6) [1.5 (4.9)]    | 1/7.1 [1/5.9] | 77                          | CL-M2, CL-43A | HB-7      | 87 x 187                                       | 1,300      | ④      |        | ④      | ①      |           |           |           |      | ✓                                 | 0          | ✓                                 | 3                                  |
| AF VR Zoom-Nikkor 80-400mm f/4.5-5.6D ED <sup>*1</sup> | 11/17                               | 30 10'-6 10'                         | 20 -4                              | 32             | 2.3 (7.5)              | 1/4.8         | 77                          | CL-M1         | HB-24     | 91 x 171                                       | 1,360      | ④      |        |        |        |           |           |           |      | ✓                                 | 2          | ✓                                 | 3                                  |
| AF-S VR Zoom-Nikkor 200-400mm f/4G IF-ED <sup>*1</sup> | 17/24                               | 12 20'-6 10'                         | 8 -4                               | 32             | 2 (6.6)                | 1/3.7         | 52                          | CL-L2         | HK-30     | 124 x 365                                      | 3,275      |        |        |        |        | ②         | ①         | ①         |      | Not usable                        | Not usable |                                   |                                    |
| <b>Fisheye</b>   |                                     |                                      |                                    |                |                        |               |                             |               |           |  |            |        |        |        |        |           |           |           |      |                                   |            |                                   |                                    |
| AF Fisheye-Nikkor 16mm f/2.8D                          | 5/8                                 | 180                                  | 107                                | 22             | 0.25 (0.85)            | 1/10          | Provided                    | CL-0715       | Built-in  | 63 x 57  | 290        | ①      |        | ①      |        |           |           |           |      | Not usable                        | Not usable |                                   |                                    |
| <b>Wideangle</b>                                       |                                     |                                      |                                    |                |                        |               |                             |               |           |  |            |        |        |        |        |           |           |           |      |                                   |            |                                   |                                    |
| AF Nikkor 14mm f/2.8D ED                               | 12/14                               | 114                                  | 90                                 | 22             | 0.2 (0.66)             | 1/6.7         | Rear-attachment type        | CL-S2         | Built-in  | 87 x 86.5                                      | 670        | ①      |        | ①      |        |           |           |           |      | Not usable                        | Not usable |                                   |                                    |
| AF Nikkor 20mm f/2.8D                                  | 9/12                                | 94                                   | 70                                 | 22             | 0.25 (0.85)            | 1/8.3         | 62                          | CL-S2         | HB-4      | 69 x 42.5                                      | 270        | ①      |        | ①      |        |           |           |           |      | ✓ <sup>*2</sup>                   | 0          | ✓                                 | 0                                  |
| AF Nikkor 24mm f/2.8D                                  | 9/9                                 | 84                                   | 61                                 | 22             | 0.3 (1)                | 1/8.9         | 52                          | CL-0715       | HN-1      | 64.5 x 46                                      | 270        | ①      |        | ①      |        |           |           |           |      | ✓                                 | 0          | ✓                                 | 1                                  |
| AF Nikkor 28mm f/2.8D                                  | 6/6                                 | 74                                   | 53                                 | 22             | 0.25 (0.85)            | 1/5.6         | 52                          | CL-0715       | HN-2      | 65 x 44.5                                      | 205        | ①      |        | ①      |        |           |           |           |      | ✓                                 | 0          | ✓                                 | 1                                  |
| AF Nikkor 35mm f/2D                                    | 5/6                                 | 62                                   | 44                                 | 22             | 0.25 (0.85)            | 1/4.2         | 52                          | CL-0715       | HN-3      | 64.5 x 43.5                                    | 205        | ①      |        | ①      |        |           |           |           |      | ✓                                 | 1          | ✓                                 | 2                                  |
| <b>Normal</b>  |                                     |                                      |                                    |                |                        |               |                             |               |           |  |            |        |        |        |        |           |           |           |      |                                   |            |                                   |                                    |
| AF Nikkor 50mm f/1.4D                                  | 6/7                                 | 46                                   | 31 30'                             | 16             | 0.45 (1.5)             | 1/6.8         | 52                          | CL-0715       | HR-2      | 64.5 x 42.5                                    | 230        | ③      |        | ③      |        |           |           |           |      | ✓                                 | 1          | ✓                                 | 3                                  |
| AF Nikkor 50mm f/1.8D                                  | 5/6                                 | 46                                   | 31 30'                             | 22             | 0.45 (1.5)             | 1/6.6         | 52                          | CL-0715       | HR-2      | 63.5 x 39                                      | 155        | ①      |        | ①      |        |           |           |           |      | ✓                                 | 1          | ✓                                 | 3                                  |
| <b>Telephoto</b>                                       |                                     |                                      |                                    |                |                        |               |                             |               |           |  |            |        |        |        |        |           |           |           |      |                                   |            |                                   |                                    |
| AF Nikkor 85mm f/1.4D IF                               | 8/9                                 | 28 30'                               | 18 50'                             | 16             | 0.85 (3)               | 1/8.8         | 77                          | CL-44         | HN-31     | 80 x 72.5                                      | 550        | ①      |        | ①      |        |           |           |           |      | ✓                                 | 1          | ✓                                 | 3                                  |
| AF Nikkor 85mm f/1.8D                                  | 6/6                                 | 28 30'                               | 18 50'                             | 16             | 0.85 (3)               | 1/9.2         | 62                          | CL-0815       | HN-23     | 71.5 x 58.5                                    | 380        | ③      |        | ⑤      |        |           |           |           |      | ✓                                 | 2          | ✓                                 | 4                                  |
| AF DC-Nikkor 105mm f/2D                                | 6/6                                 | 23 20'                               | 15 20'                             | 16             | 0.9 (3)                | 1/7.7         | 72                          | CL-S3, CL-38  | Built-in  | 79 x 111                                       | 640        |        |        |        |        |           |           |           |      | ✓                                 | 1          | ✓                                 | 5                                  |
| AF DC-Nikkor 135mm f/2D                                | 6/7                                 | 18                                   | 12                                 | 16             | 1.1 (4)                | 1/7.1         | 72                          | CL-S4, CL-38  | Built-in  | 79 x 120                                       | 815        |        |        |        | ①      |           |           |           |      | ✓                                 | 1          | ✓                                 | 4                                  |
| AF Nikkor 180mm f/2.8D IF-ED                           | 6/8                                 | 13 40'                               | 9                                  | 22             | 1.5 (5)                | 1/6.6         | 72                          | CL-S4, CL-38  | Built-in  | 78.5 x 144                                     | 760        | ④      |        | ④      |        |           |           |           |      | ✓                                 | 5          | ✓                                 | 5                                  |
| AF-S VR Nikkor 200mm f/2G IF-ED                        | 9/13                                | 12 20'                               | 8                                  | 22             | 1.9 (6.2)              | 1/8.1         | 52                          | CL-L1         | HK-31     | 124 x 203                                      | 2,900      |        |        |        |        | ②         | ②         | ②         |      | Not usable                        | Not usable |                                   |                                    |
| AF-S VR Nikkor 300mm f/2.8G IF-ED                      | 8/11                                | 8 10'                                | 5 20'                              | 22             | 2.2 (7.2)              | 1/6.4         | 52                          | CL-L1         | HK-30     | 124 x 267.5                                    | 2,870      |        |        |        |        | ②         | ②         | ②         |      | Not usable                        | Not usable |                                   |                                    |
| AF-S Nikkor 300mm f/4D IF-ED <sup>*1</sup>             | 6/10                                | 8 10'                                | 5 20'                              | 32             | 1.45 (4.8)             | 1/3.7         | 77                          | CL-M2         | Built-in  | 90 x 222.5                                     | 1,440      |        | ①      |        | ①      | ②         | ①         | ①         |      | ✓ <sup>*2</sup>                   | 2          | ✓                                 | 5                                  |
| AF-S NIKKOR 400mm f/2.8G ED VR <sup>*1</sup>           | 11/14                               | 6 10'                                | 4                                  | 22             | 2.8 (9.2)              | 1/6.3         | 52                          | CT-404, CL-L2 | HK-33     | 159.5 x 368                                    | 4,620      |        |        |        |        | ②         | ②         | ②         |      | Not usable                        | Not usable |                                   |                                    |
| AF-S NIKKOR 500mm f/4G ED VR <sup>*1</sup>             | 11/14                               | 5                                    | 3 10'                              | 22             | 3.85 (12.6)            | 1/6.9         | 52                          | CT-504, CL-L2 | HK-34     | 139.5 x 391                                    | 3,880      |        |        |        |        | ②         | ①         | ①         |      | Not usable                        | Not usable |                                   |                                    |
| AF-S NIKKOR 600mm f/4G ED VR <sup>*1</sup>             | 12/15                               | 4 10'                                | 2 40'                              | 22             | 4.8 (15.7)             | 1/7.4         | 52                          | CT-607, CL-L2 | HK-35     | 166 x 445                                      | 5,060      |        |        |        |        | ②         | ①         | ①         |      | Not usable                        | Not usable |                                   |                                    |
| <b>Special Purpose</b>                                 |                                     |                                      |                                    |                |                        |               |                             |               |           |  |            |        |        |        |        |           |           |           |      |                                   |            |                                   |                                    |
| AF-S Micro NIKKOR 60mm f/2.8G ED                       | 9/12                                | 39 40'                               | 26 30'                             | 32             | 0.185 (0.6)            | 1             | 62                          | CL-1018       | HB-42     | 73 x 89  | 425        |        |        |        |        |           |           |           |      | ✓                                 | 1          | ✓                                 | 3                                  |
| AF Micro-Nikkor 60mm f/2.8D                            | 7/8                                 | 39 40'                               | 26 30'                             | 32             | 0.219 (8 3/4 in.)      | 1             | 62                          | CL-0815       | HN-22     | 70 x 74.5                                      | 440        | ③      |        | ③      |        |           |           |           |      | ✓                                 | 1          | ✓                                 | 3                                  |
| AF-S VR Micro-Nikkor 105mm f/2.8G IF-ED                | 12/14                               | 23 20'                               | 15 20'                             | 32             | 0.314 (1)              | 1             | 62                          | CL-1020       | HB-38     | 83 x 116                                       | 790        |        |        |        |        | ①         | ①         | ①         |      | ✓                                 | 4          | ✓                                 | 5                                  |
| AF Micro-Nikkor 200mm f/4D IF-ED <sup>*1</sup>         | 8/13                                | 12 20'                               | 8                                  | 32             | 0.5 (1.5/8)            | 1             | 62                          | CL-M2, CL-45  | HN-30     | 76 x 193                                       | 1,190      |        |        |        |        |           |           |           |      | ✓                                 | 5          | ✓                                 | 5                                  |
| PC-E NIKKOR 24mm f/3.5D ED                             | 10/13                               | 84                                   | 61                                 | 32             | 0.21 (0.75)            | 1/2.7         | 77                          | CL-1120       | HB-41     | 82.5 x 108                                     | 730        |        |        |        |        |           |           |           |      |                                   |            |                                   |                                    |
| PC-E Micro NIKKOR 45mm f/2.8D ED                       | 8/9                                 | 51                                   | 34 50'                             | 32             | 0.253 (0.83)           | 1/2           | 77                          | CL-1120       | HB-43     | 82.5 x 112                                     | 740        |        |        |        |        |           |           |           |      |                                   |            |                                   |                                    |
| PC-E Micro NIKKOR 85mm f/2.8D                          | 5/6                                 | 28 30'                               | 18 50'                             | 32             | 0.39 (1.3)             | 1/2           | 77                          | CL-1120       | HB-22     | 83.5 x 107                                     | 635        |        |        |        |        |           |           |           |      |                                   |            |                                   |                                    |
| PC Micro-Nikkor 85mm f/2.8D <sup>*1</sup>              | 5/6                                 | 28 30'                               | 18 50'                             | 45             | 0.39 (1.3)             | 1/2           | 77                          | CL-75         | HB-22     | 83.5 x 109.5                                   | 775        |        |        |        | ①      |           |           |           |      | ✓ <sup>*2</sup>                   | 0          | ✓                                 | 0                                  |
| <b>AF-S Teleconverters<sup>*2</sup></b>                |                                     |                                      |                                    |                |                        |               |                             |               |           |  |            |        |        |        |        |           |           |           |      |                                   |            |                                   |                                    |
| AF-S Teleconverter TC-14E II                           | 5/5                                 |                                      |                                    |                |                        |               |                             | CL-0715       |           | 66 x 24.5                                      | 200        |        |        |        |        |           |           |           |      |                                   |            |                                   |                                    |
| AF-S Teleconverter TC-17E II                           | 4/7                                 |                                      |                                    |                |                        |               |                             | CL-0715       |           | 66 x 31.5                                      | 250        |        |        |        |        |           |           |           |      |                                   |            |                                   |                                    |
| AF-S Teleconverter TC-20E II                           | 6/7                                 |                                      |                                    |                |                        |               |                             | CL-0715       |           | 66 x 55  | 355        |        |        |        |        |           |           |           |      |                                   |            |                                   |                                    |

\*1 Tripod mounting collar is provided.  
 \*2 Compatible with AF-S lenses except AF-S 14-24mm f/2.8G ED, 17-35mm f/2.8D IF-ED, 24-70mm f/2.8G ED, VR 24-120mm f/3.5-5.6G IF-ED, 28-70mm f/2.8D IF-ED, VR 70-300mm f/4.5-5.6G IF-ED and DX NIKKOR lenses.  
 \*3 The camera's exposure metering and flash control system do not work properly when shifting and/or tilting the lens, or when using an aperture other than the maximum aperture. Shifting and/or tilting the lens to a large degree can cause some vignetting



# Manual-focus Lenses

A versatile and unique selection of lenses



© Fraser Harding

## Nikkor 20mm f/2.8



**Versatile ultra-wideangle lens for general photography**

Lens construction: 12 elements in 9 groups  
Closest focusing: 0.25m/0.85 ft.  
Picture angle: 94°  
Filter attachment size: 62mm  
Hood: HK-14  
Dimensions: 65 x 42.5mm  
Weight: 260g

## Nikkor 24mm f/2.8



**Superb wideangle for landscapes or candid**

Lens construction: 9 elements in 9 groups  
Closest focusing: 0.3m/1 ft.  
Picture angle: 84°  
Filter attachment size: 52mm  
Hood: HN-1  
Dimensions: 63 x 46mm  
Weight: 275g

## Nikkor 28mm f/2.8



**Standard wideangle for general photography**

Lens construction: 8 elements in 8 groups  
Closest focusing: 0.2m/0.7 ft.  
Picture angle: 74°  
Filter attachment size: 52mm  
Hood: HN-2  
Dimensions: 63 x 44.5mm  
Weight: 250g

## Nikkor 35mm f/1.4



**Superior image quality with a wide aperture of f/1.4**

Lens construction: 9 elements in 7 groups  
Closest focusing: 0.3m/1 ft.  
Picture angle: 62°  
Filter attachment size: 52mm  
Hood: HN-3  
Dimensions: 67.5 x 62mm  
Weight: 400g

## Nikkor 50mm f/1.2



**Ultra-fast f1.2 aperture normal lens**

Lens construction: 7 elements in 6 groups  
Closest focusing: 0.5m/1.7 ft.  
Picture angle: 46°  
Filter attachment size: 52mm  
Hood: HS-12, HR-2  
Dimensions: 68.5 x 47.5mm  
Weight: 360g

## Nikkor 50mm f/1.4



**High-performance normal lens**

Lens construction: 7 elements in 6 groups  
Closest focusing: 0.45m/1.5 ft.  
Picture angle: 46°  
Filter attachment size: 52mm  
Hood: HS-9, HR-1  
Dimensions: 63 x 40mm  
Weight: 250g

## Micro-Nikkor 55mm f/2.8



**Superb normal Macro lens with 1/2 maximum reproduction ratio**

Lens construction: 6 elements in 5 groups  
Closest focusing: 0.25m/0.9 ft.  
Picture angle: 43°  
Filter attachment size: 52mm  
Hood: HN-3  
Dimensions: 63.5 x 62mm  
Weight: 290g

## Micro-Nikkor 105mm f/2.8



**Medium telephoto with macro close-up capability**

Lens construction: 10 elements in 9 groups  
Closest focusing: 0.41m/1.34 ft.  
Picture angle: 23°20'  
Filter attachment size: 52mm  
Hood: HS-14 (provided)  
Dimensions: 66.5 x 83.5mm  
Weight: 515g

## Specifications

| Lens   | Lens Construction (groups/elements) | Picture Angle | Minimum f/Stop | Closest Marked Focus Distance [Macro Setting] [m (ft.)] | Maximum Reproduction Ratio (Macro Setting) | Filter Attachment Size (mm) | Lens Case                    | Lens Hood   | Dia. x Length (extension from lens mount) (mm) | Weight (g) | TC-201 | TC-301 | TC-14A | TC-14B | Max. number of hoods usable |               |   |   |
|--|-------------------------------------|---------------|----------------|---|--|-----------------------------|------------------------------|-------------|--|------------|--------|--------|--------|--------|-----------------------------|---------------|---|---|
|  |                                     |               |                |   |  |                             |                              |             |  |            |        |        |        |        | AF-3 of HN-36               | AF-4 of HN-37 |   |   |
| <b>Wideangle</b>                             |                                     |               |                |   |  |                             |                              |             |  |            |        |        |        |        |                             |               |   |   |
| Nikkor 20mm f/2.8 <sup>*1</sup>              | 9/12                                | 94            | 22             | 0.25 (0.85)   | 1/8.3                                      | 62                          | CL-0915                      | HK-14       | 65 x 42.5                                      | 260        | ①      | ①      |        |        | ✓ <sup>a</sup>              | 0             | ✓ | 0 |
| Nikkor 24mm f/2.8 <sup>*1</sup>              | 9/9                                 | 84            | 22             | 0.3 (1)   | 1/8.8                                      | 52                          | CL-0915                      | HN-1        | 63 x 46  | 275        | ①      | ①      |        |        | ✓                           | 0             | ✓ | 1 |
| Nikkor 28mm f/2.8 <sup>*1</sup>              | 8/8                                 | 74            | 22             | 0.2 (0.7)   | 1/3.9                                      | 52                          | CL-0815                      | HN-2        | 63 x 44.5                                      | 250        | ①      | ①      |        |        | ✓                           | 0             | ✓ | 1 |
| Nikkor 35mm f/1.4 <sup>*1</sup>              | 7/9                                 | 62            | 16             | 0.3 (1)   | 1/5.6                                      | 52                          | CL-S2                        | HN-3        | 67.5 x 62                                      | 400        | ②      | ②      |        |        | ✓                           | 0             | ✓ | 1 |
| <b>Normal</b>                                |                                     |               |                |   |  |                             |                              |             |  |            |        |        |        |        |                             |               |   |   |
| Nikkor 50mm f/1.2                            | 6/7                                 | 46            | 16             | 0.5 (1.7)   | 1/7.9                                      | 52                          | CL-0915                      | HS-12, HR-2 | 68.5 x 47.5                                    | 360        | ①      | ①      |        |        | ✓                           | 1             | ✓ | 2 |
| Nikkor 50mm f/1.4                            | 6/7                                 | 46            | 16             | 0.45 (1.5)  | 1/6.8                                      | 52                          | CL-0815                      | HS-9, HR-1  | 63 x 40  | 250        | ②      | ②      |        |        | ✓                           | 1             | ✓ | 3 |
| <b>Special Purpose</b>                       |                                     |               |                |   |  |                             |                              |             |  |            |        |        |        |        |                             |               |   |   |
| PC Micro-Nikkor 85mm f/2.8D <sup>*1,*2</sup> | 5/6                                 | 28 30'        | 45             | 0.39 (1.3)  | 1/2  | 77                          | CL-75                        | HB-22       | 83.5 x 109.5                                   | 775        |        |        |        | ①      | ✓ <sup>a</sup>              | 0             | ✓ | 0 |
| Micro-Nikkor 55mm f/2.8 <sup>*1</sup>        | 5/6                                 | 43            | 32             | 0.25 (0.9)  | 1/2  | 52                          | CL-0915                      | HN-3        | 63.5 x 62                                      | 290        | ①      | ①      |        |        | ✓                           | 1             | ✓ | 3 |
| Micro-Nikkor 105mm f/2.8 <sup>*1</sup>       | 9/10                                | 23 20'        | 32             | 0.41 (1.34)   | 1/2  | 52                          | CL-1018, CL-38 <sup>*3</sup> | HS-14       | 66.5 x 83.5                                    | 515        | ①      | ①      |        |        | ✓                           | 3             | ✓ | 5 |

\*1 Features Close-Range Correction (CRC) system.

\*2 The camera's exposure metering and flash control system do not work properly when shifting and/or tilting the lens, or when using an aperture other than the maximum aperture. Shifting and/or tilting the lens to a large degree can cause some vignetting. This lens cannot be used with the Nikon PRONEA S camera.

\*3 With a PN-11 ring.

① Usable.

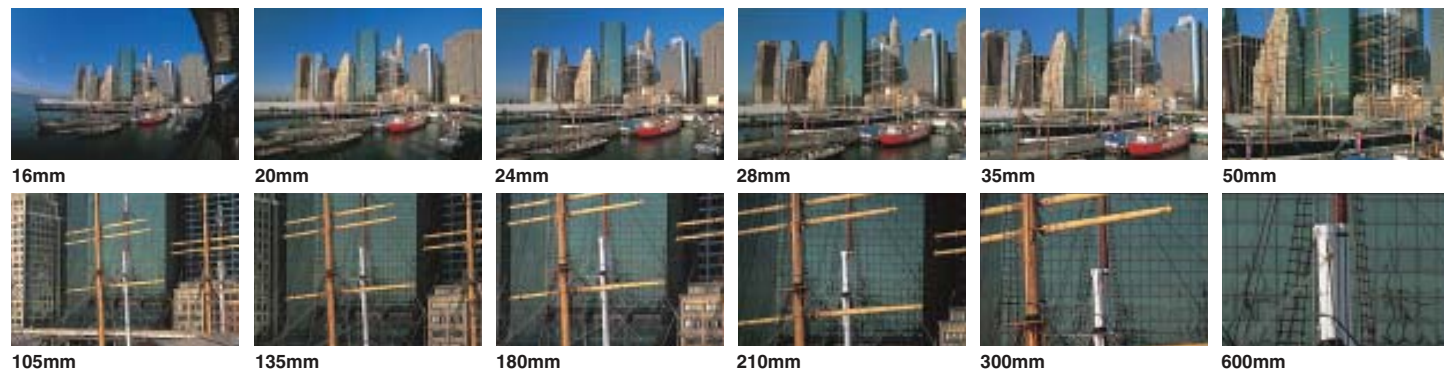
② When used at smaller aperture than f/11 with high shutter speeds, there is occasional uneven exposure.  
Not usable.

✓ Usable.

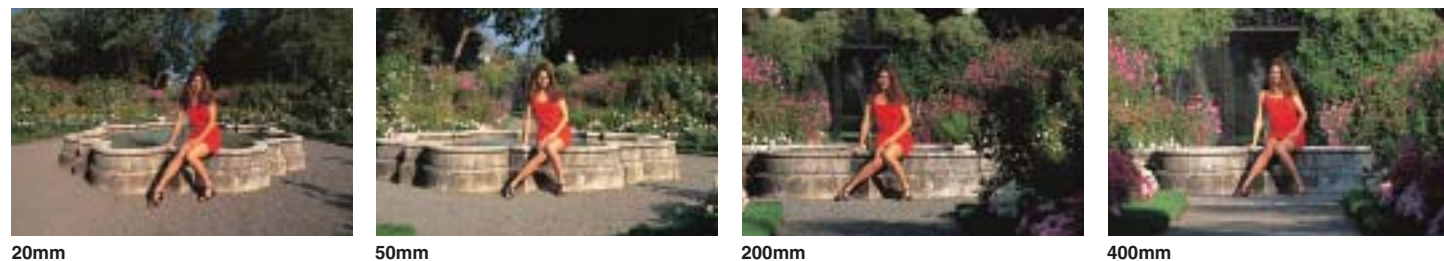
\*a Slight vignetting occurs.  
\*b Vignetting will occur only in certain situations.

# Choosing the right lens — some points to consider

Selecting which lens to purchase is one of the most important decisions you can make as a photographer, for the lens often determines both what and how you can shoot. Below, we've outlined a range of technical factors to consider when searching for the lens that's right for you.



**Picture angle**



**Perspective**

**Maximum aperture (f-number)**

**Depth of field**



# Accessories for NIKKOR Lenses

## Close-up Accessories

Auto Extension Rings PK and PN



## Tripod Mounting Spacer

AH-5 for the PC Micro-Nikkor 85mm f/2.8D



## Photographic Attachment for Fieldscope

Fieldscope Digital SLR Camera Attachment FSA-L1



## Lens Hoods



## Lens Caps

## Lens Strap

## Lens Cases

Cylindrical Case (CL):

Trunk Case (CT):

Soft Pouch (CL-S2~S4/M1/M2/L1/L2):